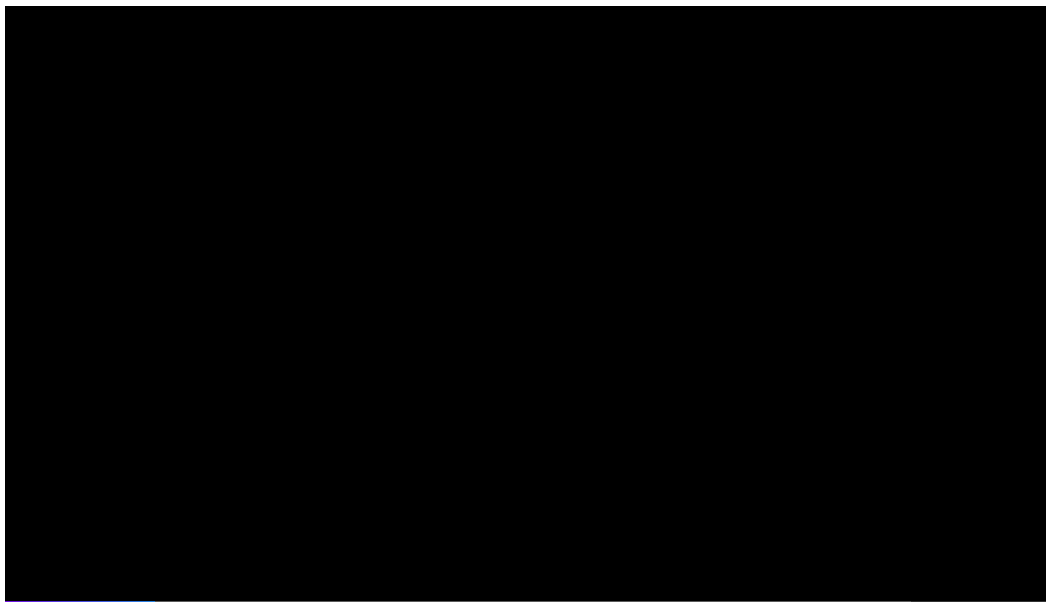


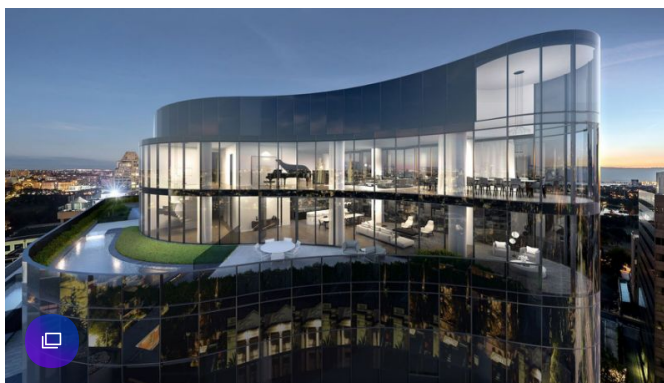
Inside Melbourne's \$45m penthouse - the city's most expensive apartment

yahoo! news Yahoo News Australia 20 August 2018



A lavish Melbourne penthouse, expected to fetch \$45 million, is set to become the most expensive apartment to hit the market in Victoria, featuring enviable city views and a \$30,000 toilet.

With the hefty price tag comes an enviable amount of mod cons, not to mention the spectacular views from your own in-ground pool.



The 1001 square-metre penthouse is the crown of Melbourne's ultra-luxe 14-level residential complex The Muse, on St Kilda Road. Source: Knight Frank

The 1001 square-metre penthouse is the crown of an ultra-luxe 14-level residential complex The Muse, Touted as "A life beyond luxury", on the corner of St Kilda Road and Toorak Road West.

Spanning the top two floors, the future resident of Melbourne's most expensive apartment will take in panoramic views of Port Phillip Bay, Albert Park Lake, Melbourne's CBD, and the Royal Botanic Gardens.





Outside on the north-facing top floor terrace of the \$45m penthouse there's a curved, in-ground pool overlooking stunning views overlooking the city. Source: Knight Frank

An expansive, sculpted circular stair connects the two levels, and there's also access via two lifts as well, according to listing agent Knight Frank.

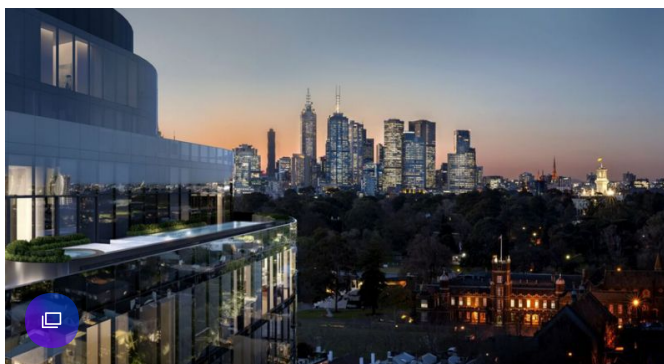
Features include a vast main suite with incredible wardrobe, ensuite bedrooms, separate guest suite, large theatre, billiard room, wine room, gym, gourmet kitchen, extensive butler's pantry, separate caterers' kitchen, study, and a steam room.



Melbourne's most expensive penthouse will go on the market this spring for more than \$40 million as part of the release of The Muse. Source: Knight Frank

Even the toilets have moved high-tech, installed with \$30,000 self-cleaning Japanese Toto toilets, that are heated and provide blow dry and massage features.

- [Search for two missing teenage girls, aged 14 and 16, in Queensland](#)
- ['Hiding in plain sight': The wanted criminals who could be living next door](#)
- [Children flee with attacker after man stabbed in the neck](#)
- [Victim's graphic images released with \\$500,000 reward to catch offender](#)
- [Mum who faints every second day relies on two-year-old to revive her](#)



Spanning the top two floors of the complex, the penthouse will take in panoramic views of Port Phillip Bay, Albert Park Lake, Melbourne's CBD, and the Royal Botanic Gardens. Source: Knight Frank

Outside on the north-facing top floor terrace there's a curved, in-ground pool overlooking stunning views.



A wardrobe this impressive comes standard in each master suite of the 42-apartment complex. Source: Knight Frank

Arriving at The Muse, residents' cars will be recognised and a lift will be waiting to take them to their residence where lights, air-conditioning or heating and blinds will have been automatically activated for their arrival.

The Muse apartment complex is planned to go on the market in October.